

88 5531 49 Hall Tree Stand (Ebony Finish)

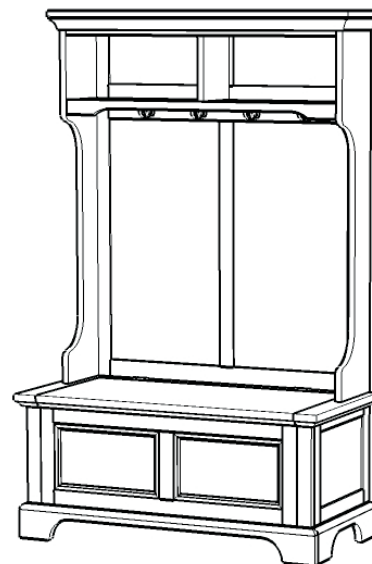
IMPORTANT NOTE

Carefully remove all the parts from the carton and put them individually on a soft cloth to prevent scratches or other damages occurring to the wood parts.

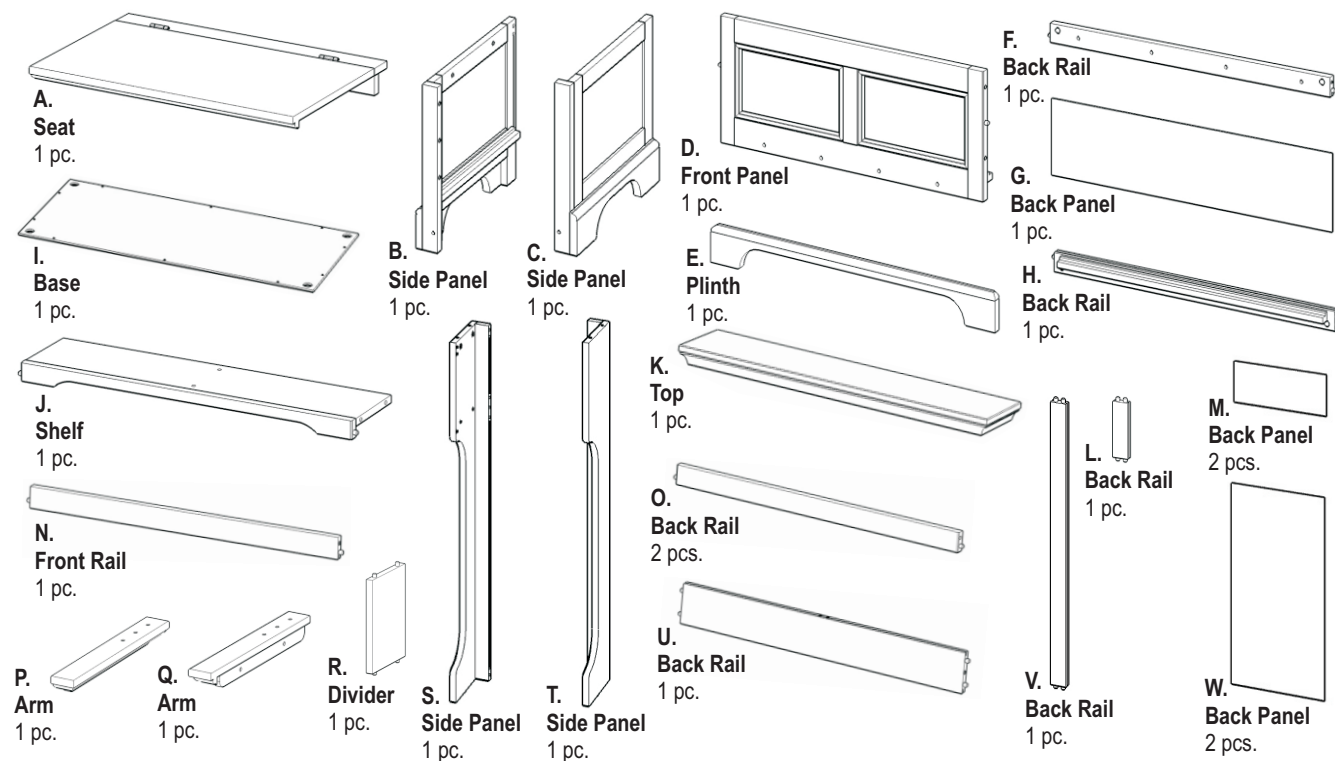
We have taken great care in the design of this product and request that you carefully and strictly follow our assembly instructions to ensure a completed product as it was designed.



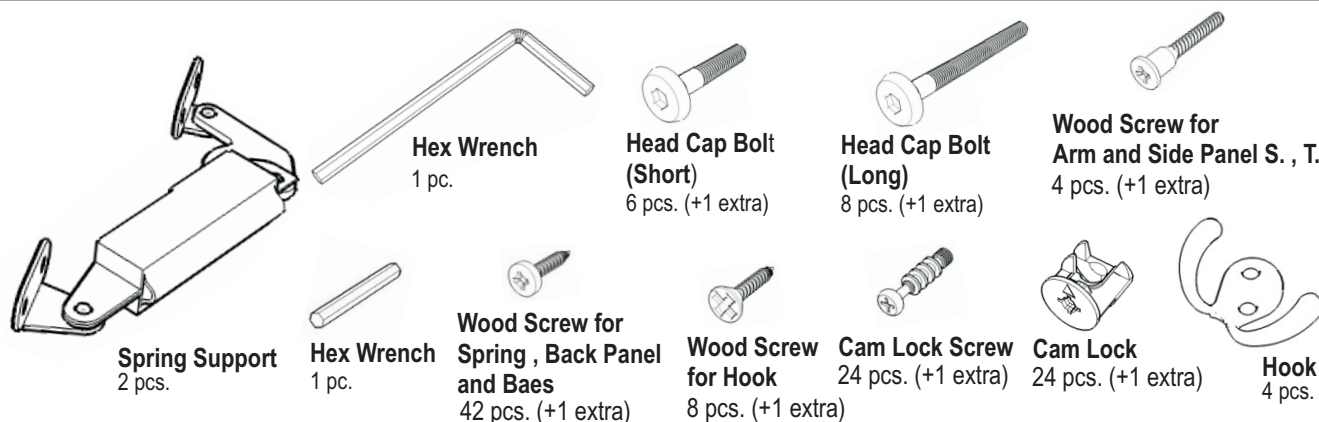
Casual Attire For Today's Home



PART LIST



HARDWARE LIST



Tools Required For Assembly : Phillips screwdriver

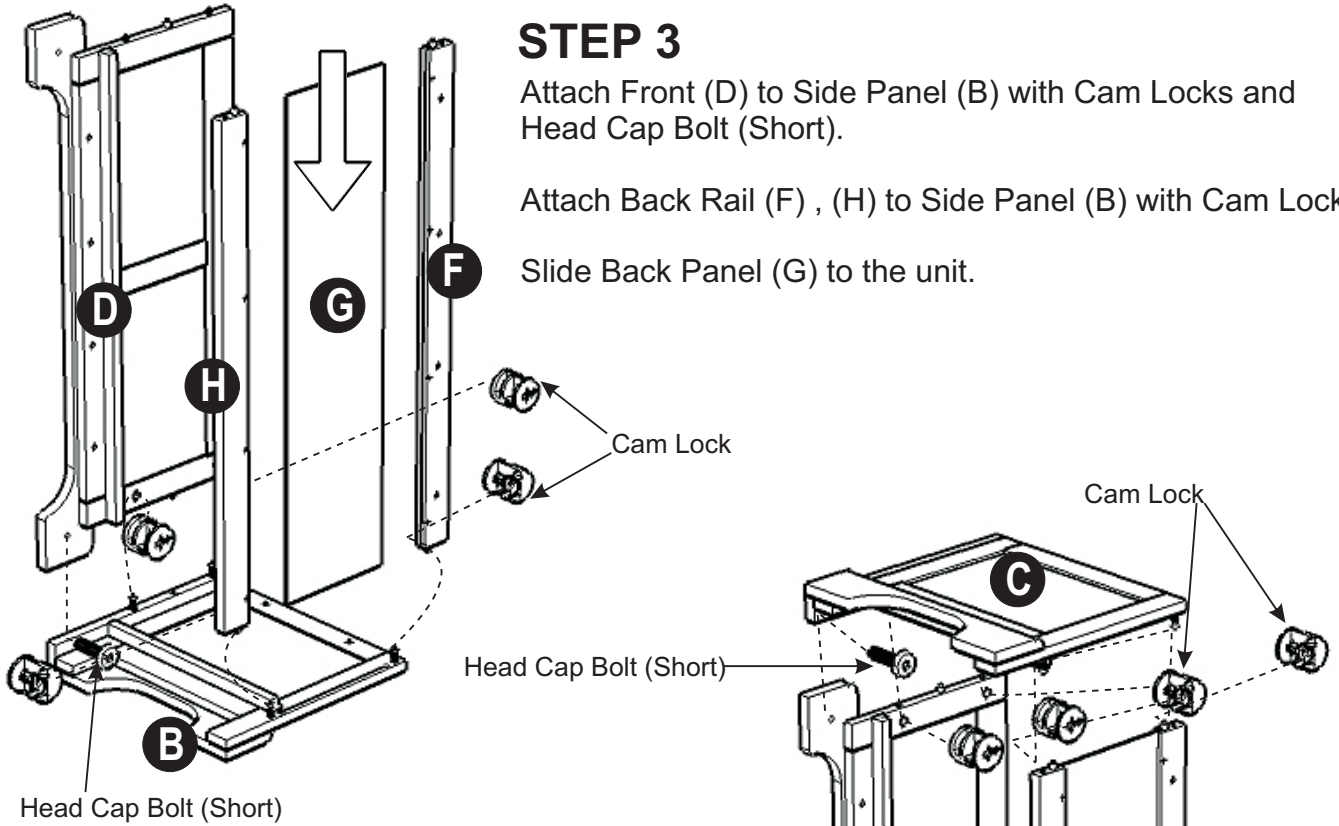
Home Styles Consumer Assistance Line 888-680-7460 and 877-831-0319
servicedesk@homestyles-furniture.com

STEP 3

Attach Front (D) to Side Panel (B) with Cam Locks and Head Cap Bolt (Short).

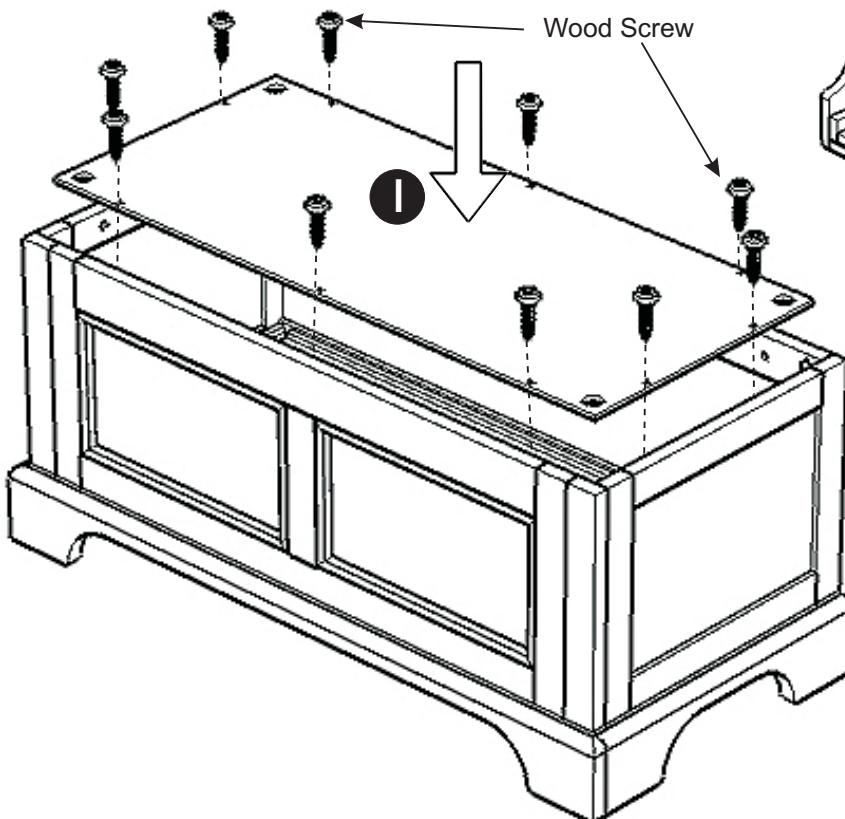
Attach Back Rail (F), (H) to Side Panel (B) with Cam Locks.

Slide Back Panel (G) to the unit.



STEP 4

Attach Side Panel (C) to the unit with Cam Locks and Head Cap Bolt (Short).



STEP 5

Insert Base (I) to the unit with Wood Screws.

STEP 6

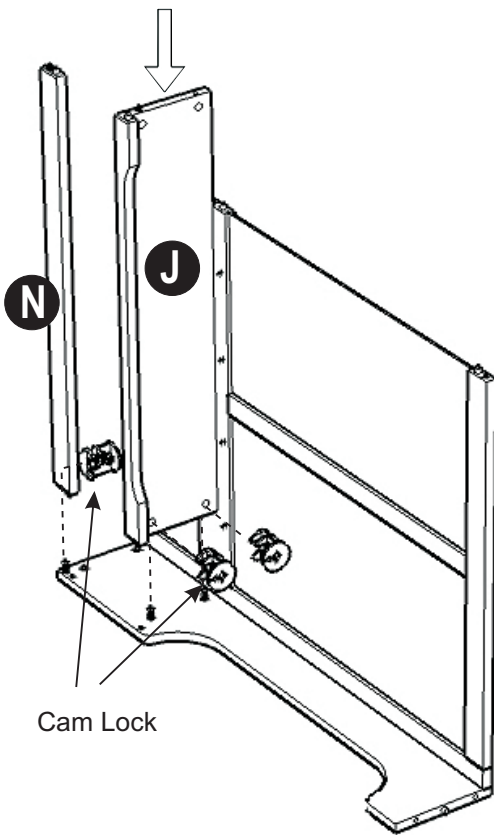
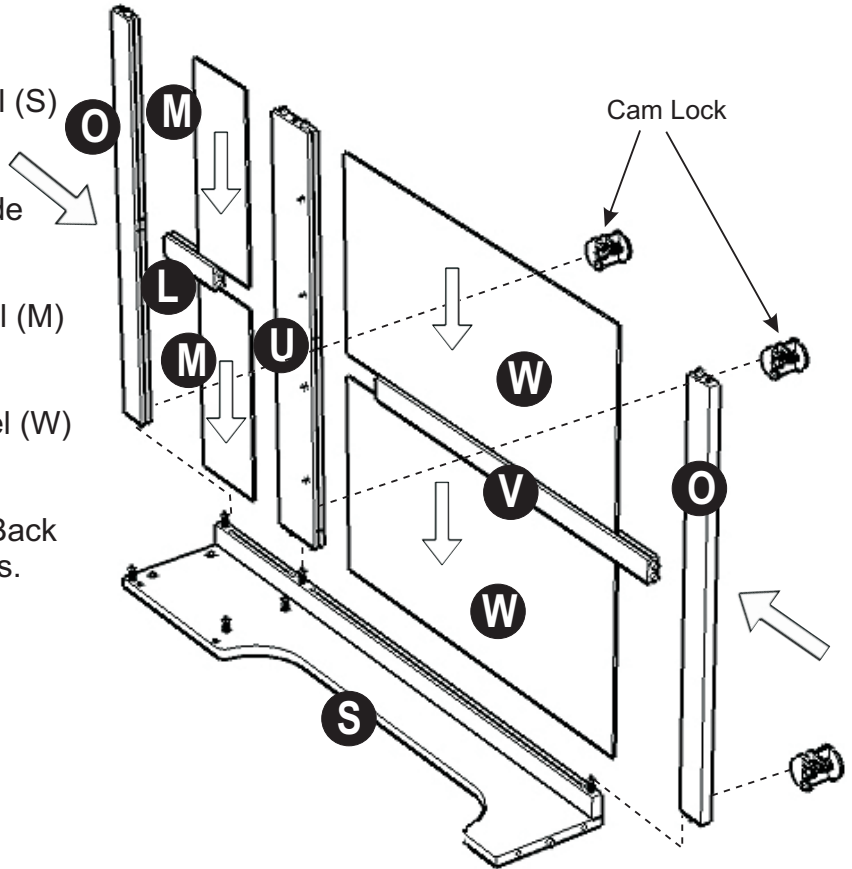
Attach Back Rail (U) to Side Panel (S) with Cam Lock.

Attach Back Panel (W), (M) to Side Panel (S) and Back Rail (U).

Attach Back Rail (L) to Back Panel (M) and Back Rail (U).

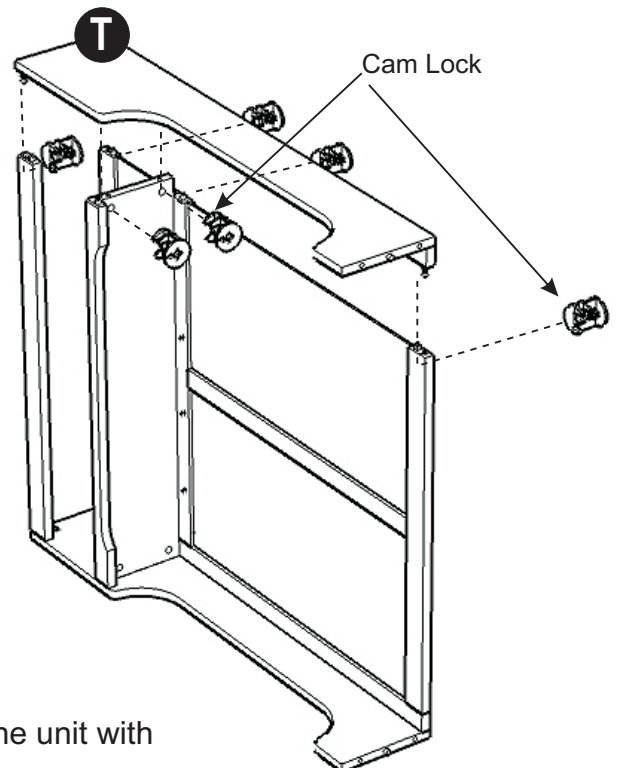
Attach Back Rail (V) to Back Panel (W) and Back Rail (U).

Attach Back Panel (W), (M) and Back Rail (O) to the unit with Cam Locks.



STEP 7

Attach Front Rail (N) and Shelf (J) to the unit with Cam Locks.



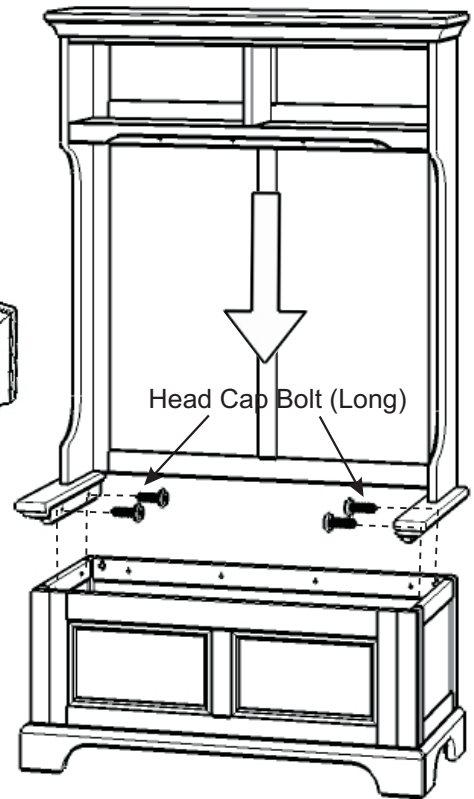
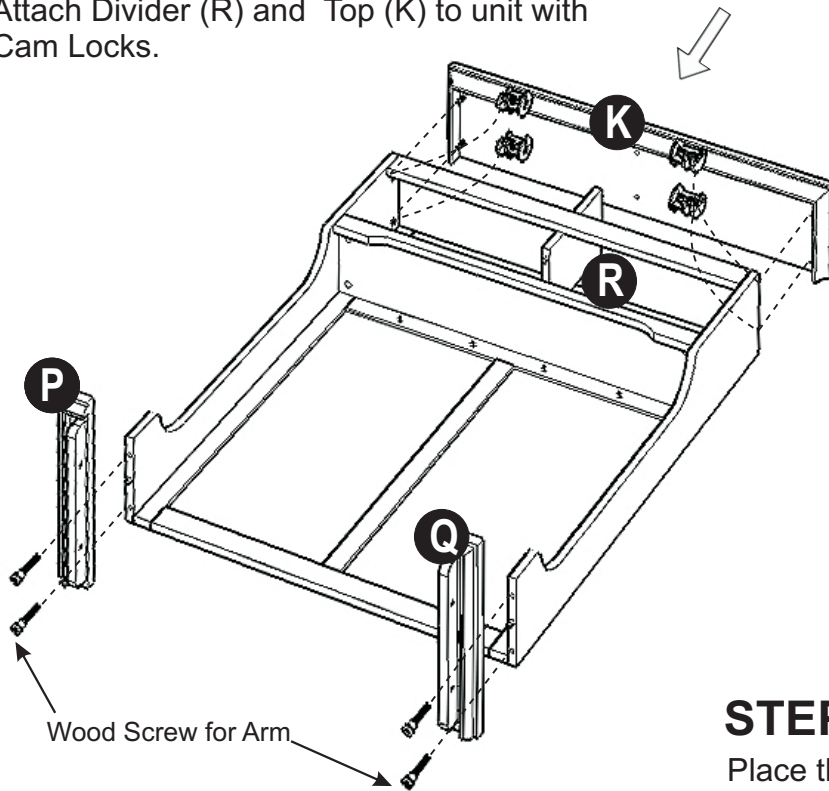
STEP 8

Attach Side Panel (T) to the unit with Cam Locks.

STEP 9

Attach Arm (P) , (Q) to the unit with Wood Screw for Arm.

Attach Divider (R) and Top (K) to unit with Cam Locks.



STEP 10

Place the Top unit onto the Base Unit with Head Cap Bolts (Long).

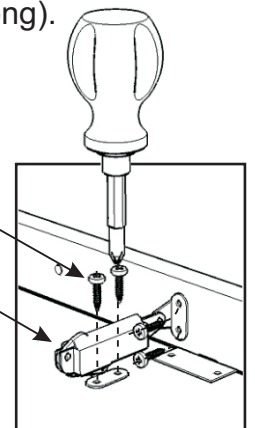
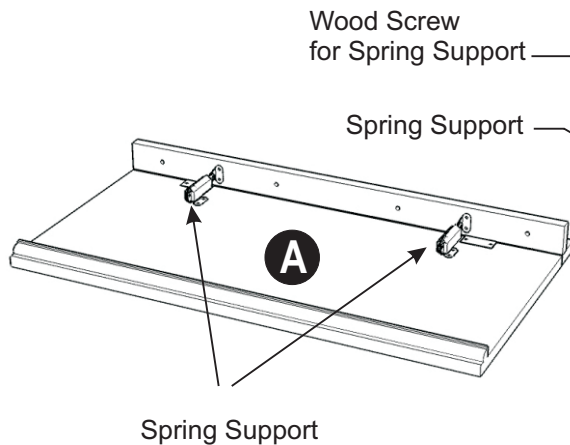
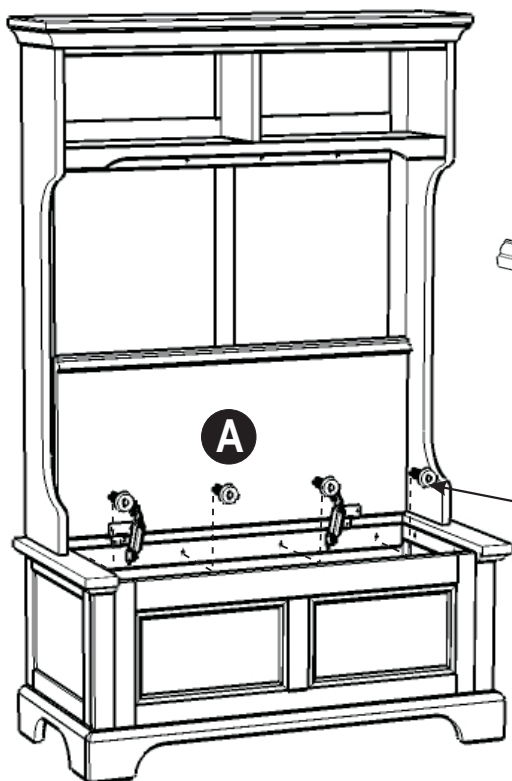
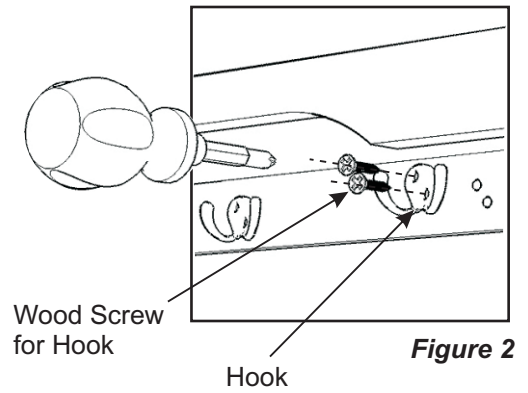
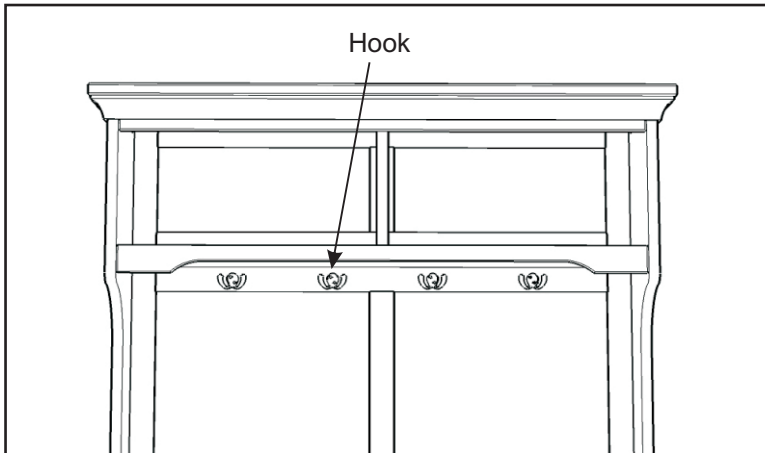


Figure 1

STEP 11

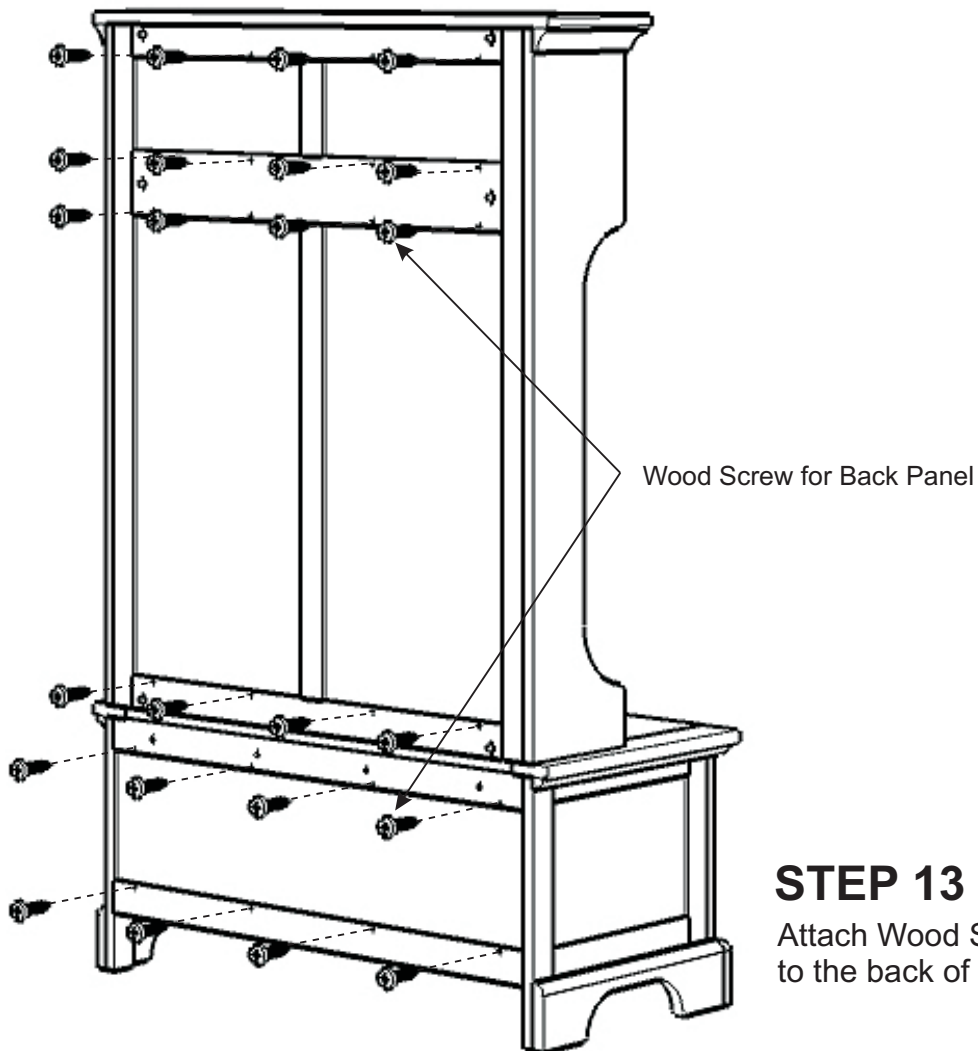
Turn over the Seat (A). Attach Spring Support to the Seat (A) with Wood Screws. (see Figure 1)

Attach the Seat (A) to the Base unit with Head Cap Bolts (Long).



STEP 12

Attach Hooks to the top of the unit with Wood Screws for Hooks.
(see Figure 2)



STEP 13

Attach Wood Screws for Back Panel to the back of the unit.