

88 9003 009

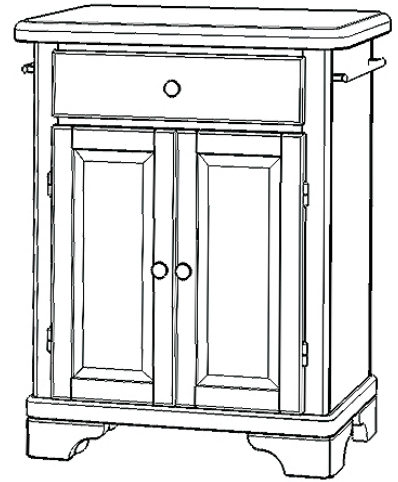
Premium Create-A-Cart Small Kitchen Cart Natural Maple Finish

IMPORTANT NOTE

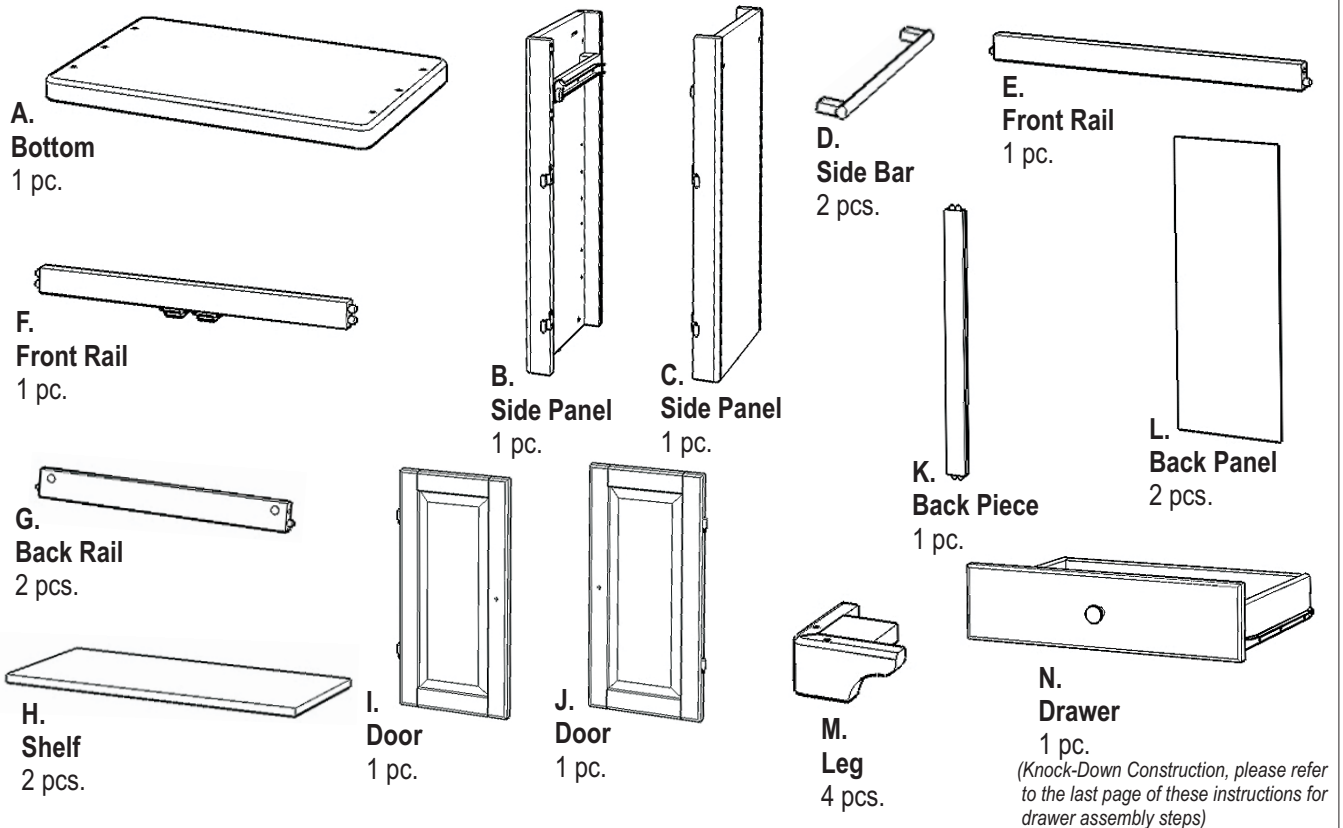
Carefully remove all the parts from the carton and put them individually on a soft cloth to prevent scratches or other damages occurring to the wood parts.

We have taken great care in the design of this product and request that you carefully and strictly follow our assembly instructions to ensure a completed product as it was designed.

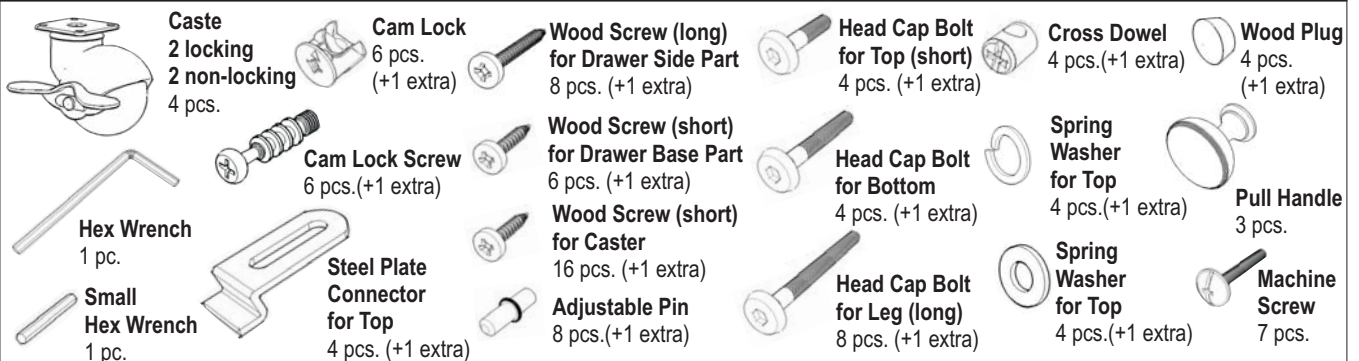
Home
Styles



Part List



Hardware List



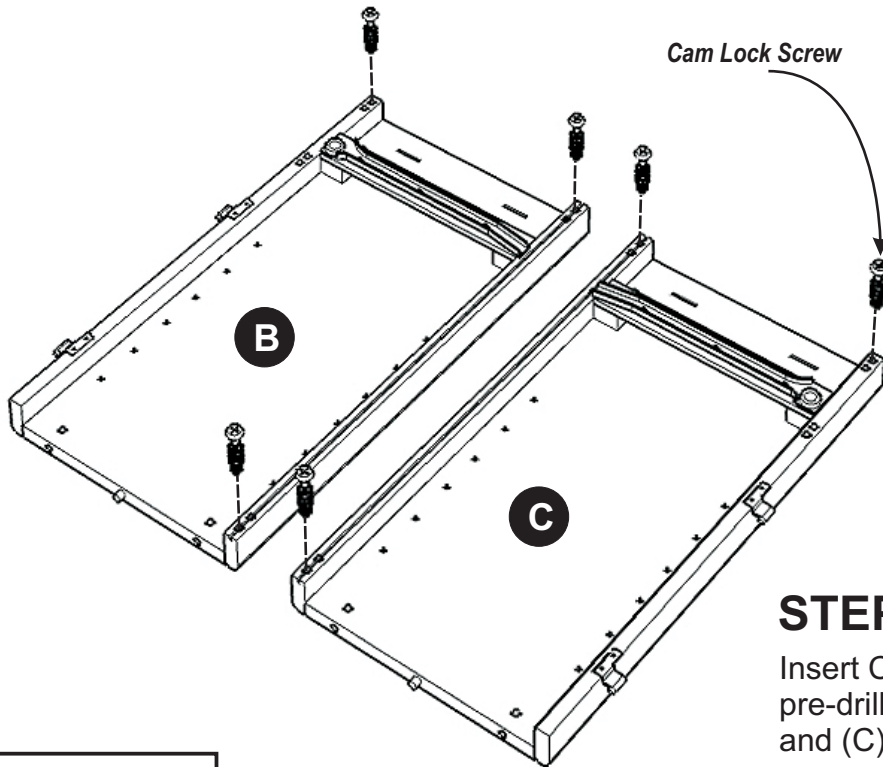
Tools required for assembly : **Phillips** screwdriver

Home Styles Consumer Assistance Line 888-680-7460 and 877-831-0319
servicedesk@homestyles-furniture.com

Assembly Instructions 2/6

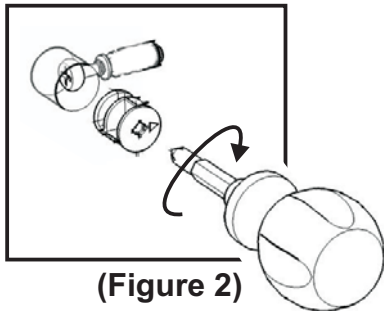
IMPORTANT

Please keep Hex Wrench in a safe place as you may need to tighten up the Head Cap Bolts in the future.



STEP 1

Insert Cam Lock Screws into the pre-drilled holes of Side Panel (B) and (C). (See figure 1)



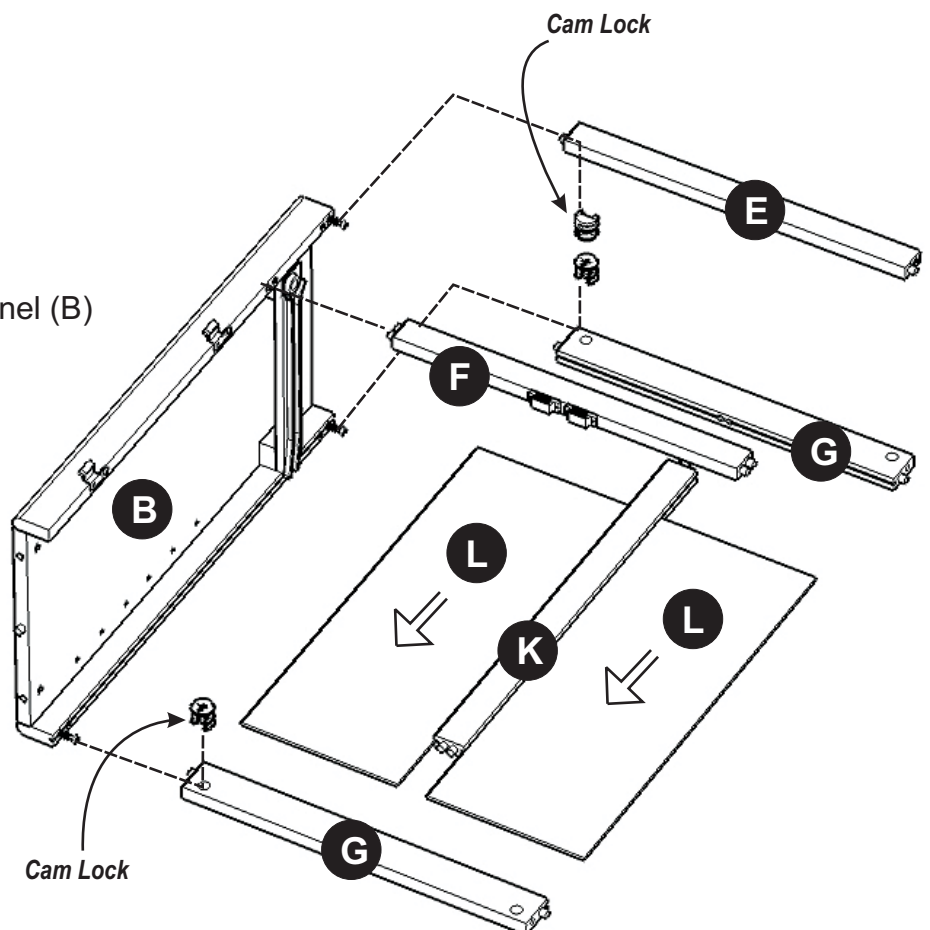
STEP 2

Attach Back Rail (G) to Side Panel (B) with Cam Lock.

Attach Back Piece (K) to Back Rail (G) and slide Back Panel (L) into place.

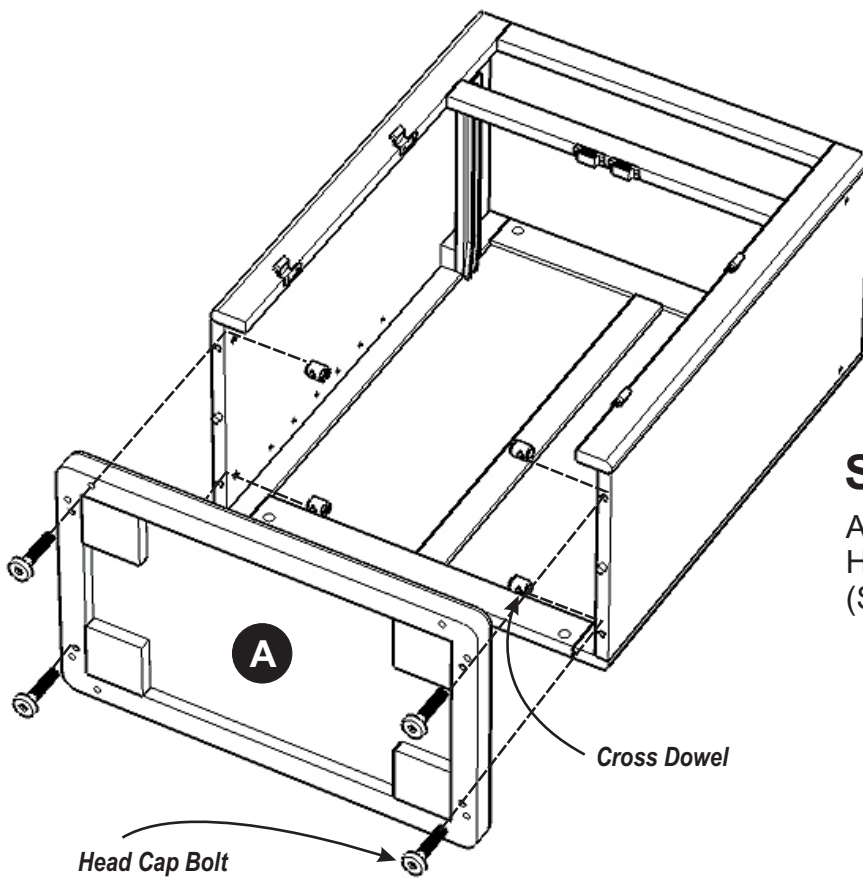
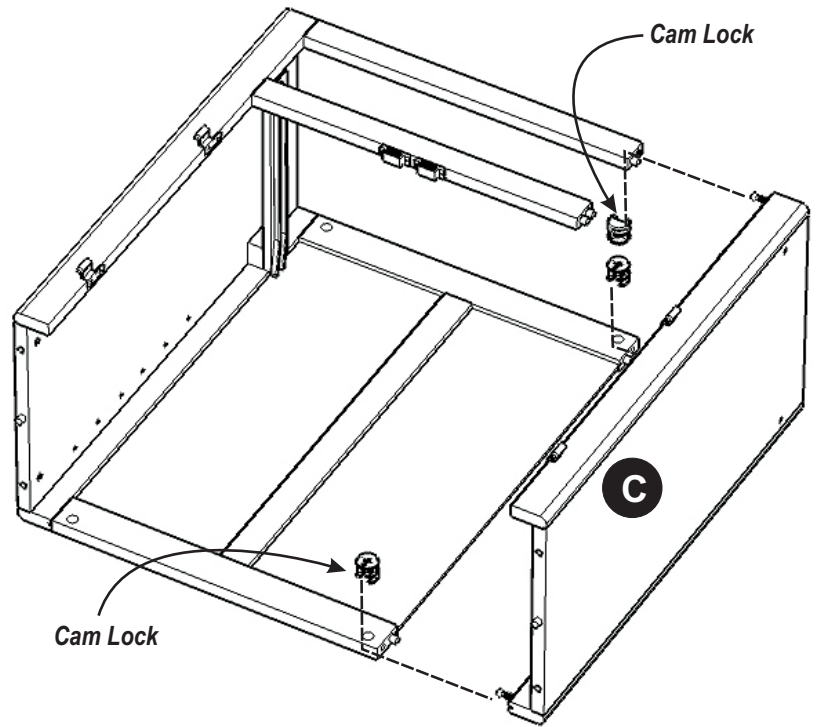
Attach Back Rail (G) to the unit With Cam Lock.

Attach Front Rail (F) and Front Rail (E) with Cam Lock. (See figure 2)



STEP 3

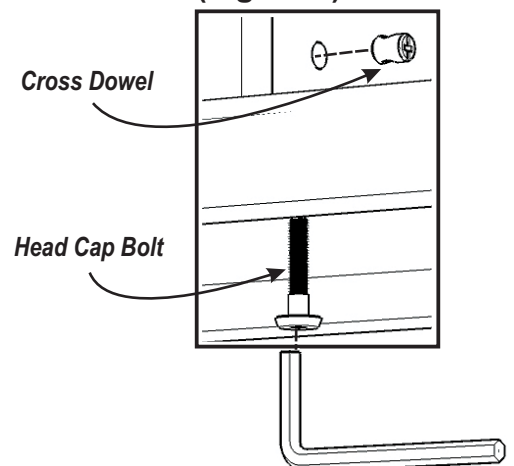
Attach Side Panel (C) to the unit with Cam Locks.

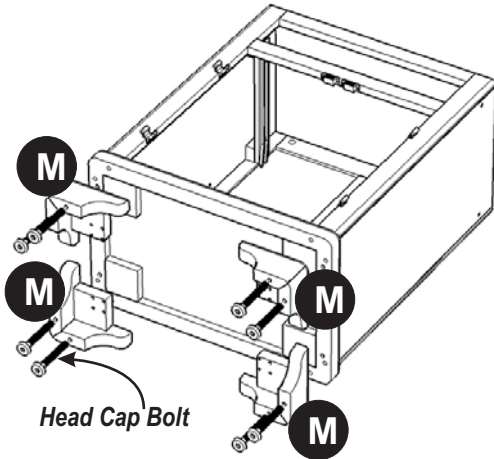


STEP 4

Attach Bottom (A) to the unit with Head Cap Bolts and Cross Dowels. (See figure 3)

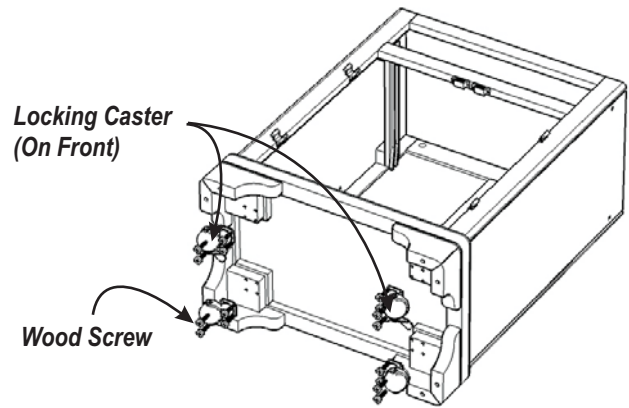
(Figure 3)





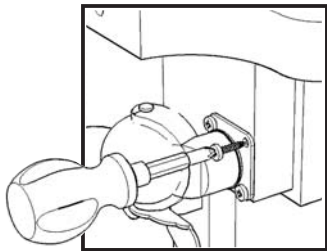
STEP 5

Attach Leg (M) to the unit with Head Cap Bolts.

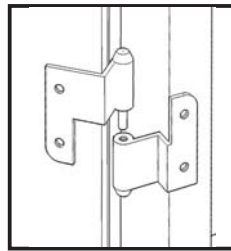


STEP 6

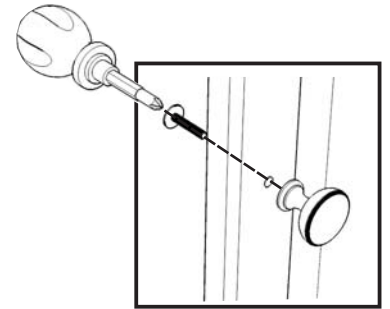
Attach the four Casters to the Leg (M) with Wood Screws. (See figure 4)



(Figure 4)



(Figure 5)



(Figure 6)

STEP 7

Attach Side Bar (D) to unit with Machine Screws.

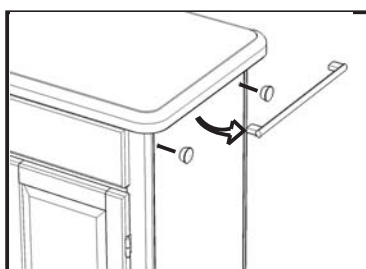
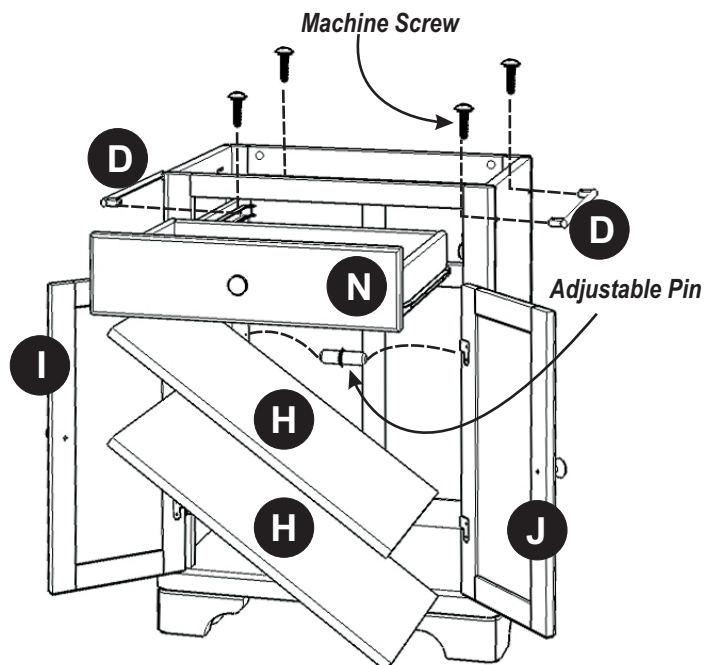
Slide Drawer (N) into position.

Insert Adjustable Pins into Side Panels and Middle Panels at the desired level.

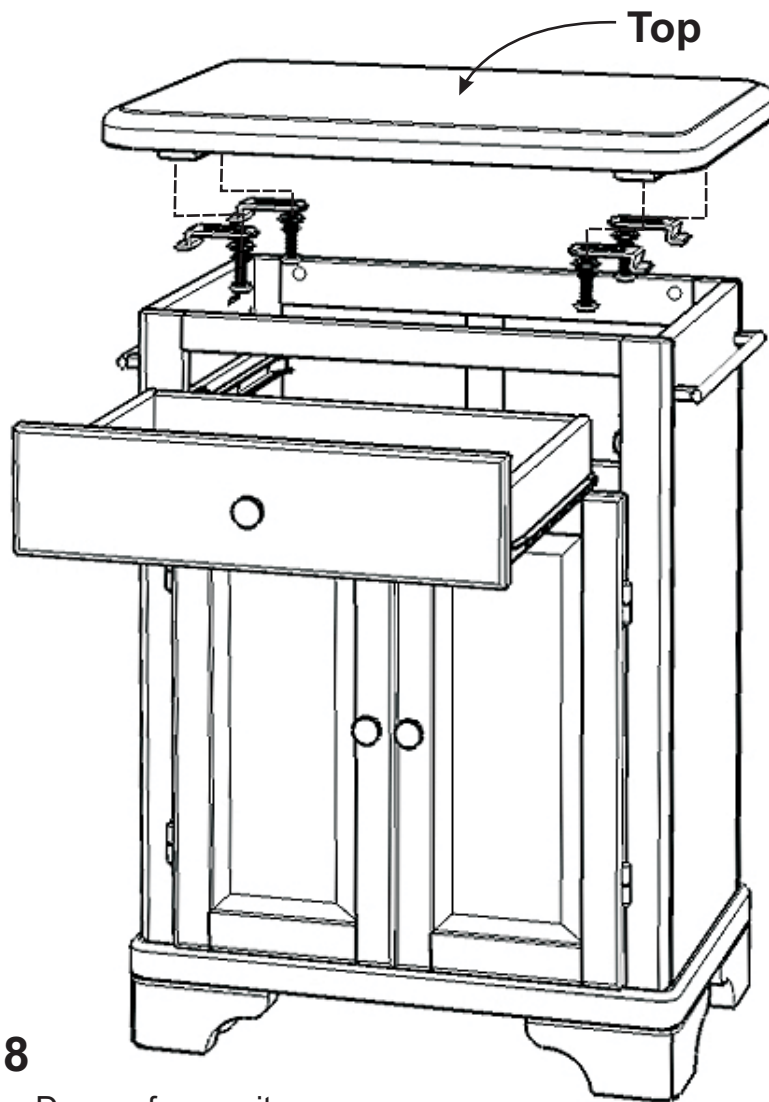
Slide Shelf (H) into place.

Attach Door (I), (J) to the Side Panels by sliding the door lift hinges into the side panel hinges. (See figure 5)

Assemble Pull Handles to Doors (I), (J) with Machine Screws. (See figure 6)



Note: If Side Bars are not desired, Wood Plugs are provided. Put Wood Plugs in Screw holes in unit in place of the Side Bars.

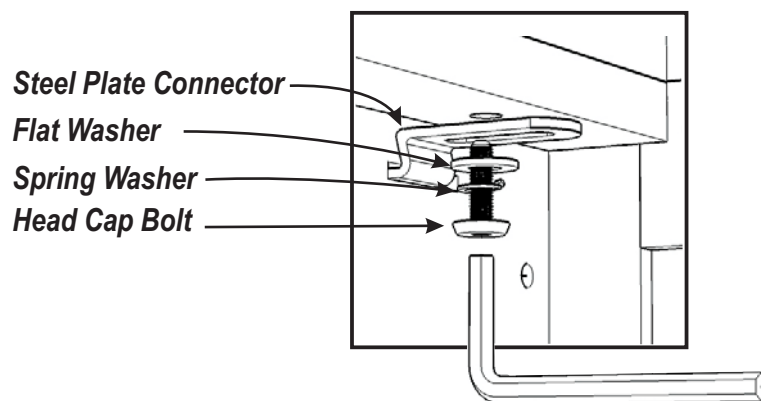


STEP 8

Pull out the Drawer from unit.

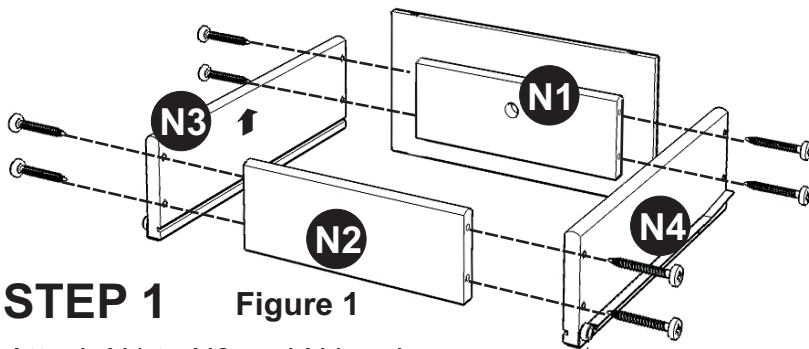
Using the Top option that you have chosen, place Top onto the unit with Steel Plate Connectors, Flat Washers, Spring Washers and Head Cap Bolts and tighten. (See figure 7)

Slide Drawer into place.



(Figure 7)

Drawer (N)



STEP 1 Figure 1

Attach N1 to N3 and N4, using a Phillips screwdriver and long wood screws (4X), tighten halfway.

Attach N2 to N3 and N4 using long wood screws (4X), tighten halfway. (see Figure 1)

MAKE SURE ROLLER IS ON THE BACK

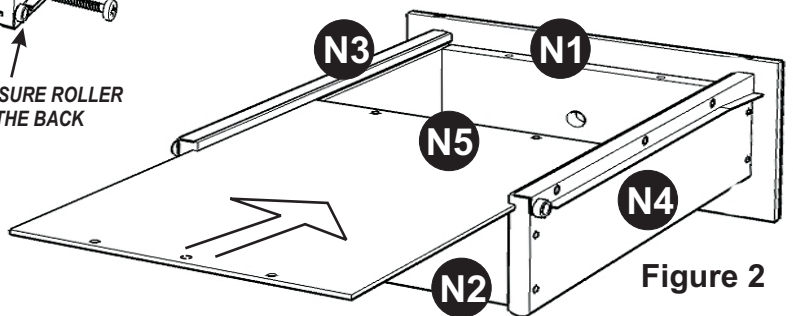


Figure 2

STEP 2

Slide N5 into the grooves in N3 and N4. Be sure to push N5 all the way forward so it meets N1. (see Figure 2)

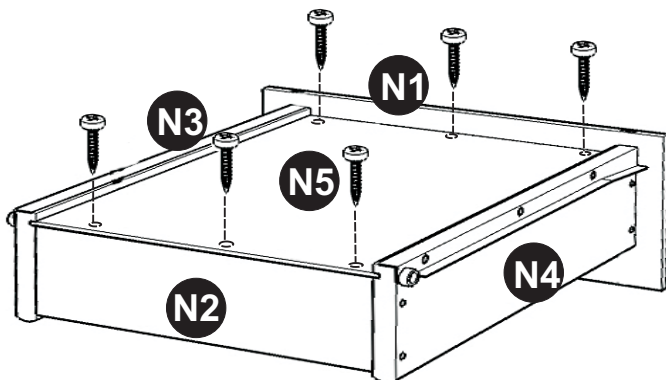
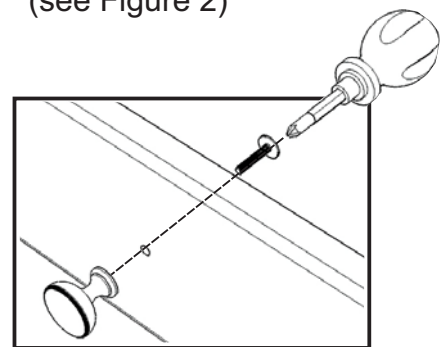


Figure 3

STEP 3

Insert short wood screws (6X) into the pre-drilled holes in N5, tighten screws. (see Figure 3)



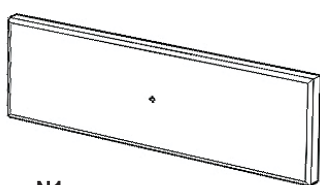
STEP 4

Assemble Pull Handle with machine screws. (see Figure 4)

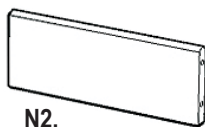
Figure 4

Tighten all screws used in drawer assembly.

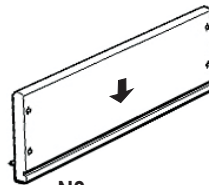
Part List



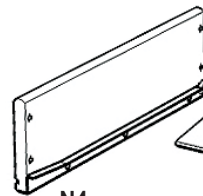
N1.
Front Part
1 pc.



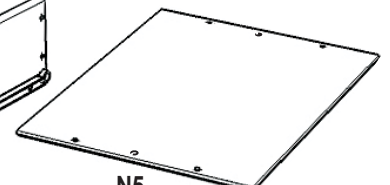
N2.
Back Part
1 pc.



N3.
Side Part
1 pc.



N4.
Side Part
1 pc.



N5.
Base Part
1 pc.