

# 88 9300 009

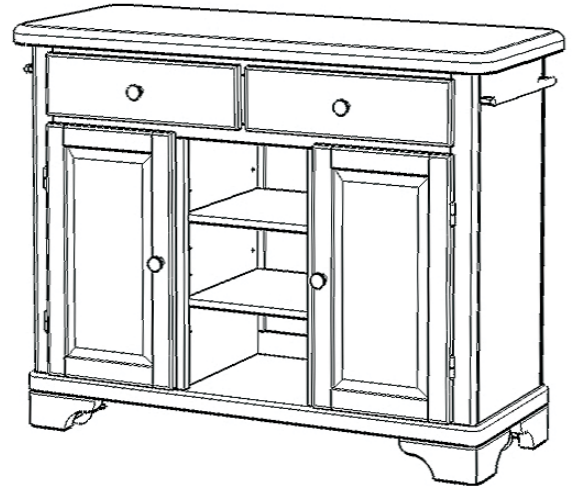
## Premium Create-A-Cart Large Kitchen Cart Natural Maple Finish

### IMPORTANT NOTE

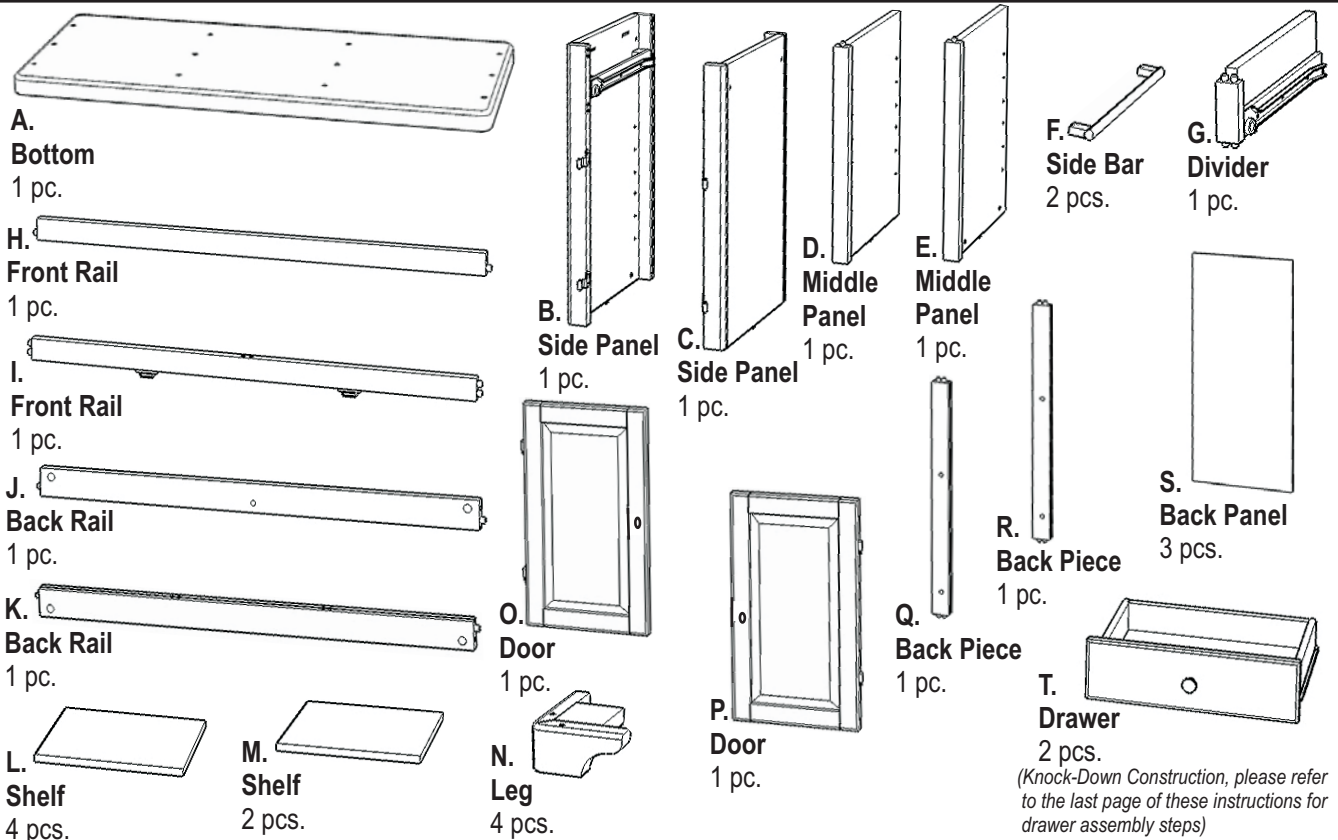
Carefully remove all the parts from the carton and put them individually on a soft cloth to prevent scratches or other damages occurring to the wood parts.

We have taken great care in the design of this product and request that you carefully and strictly follow our assembly instructions to ensure a completed product as it was designed.

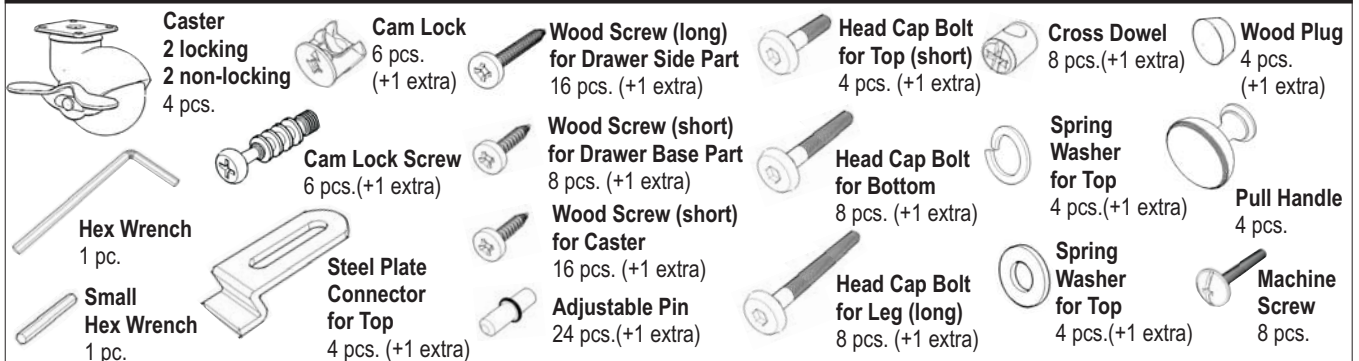
*Home Styles*



## Part List



## Hardware List



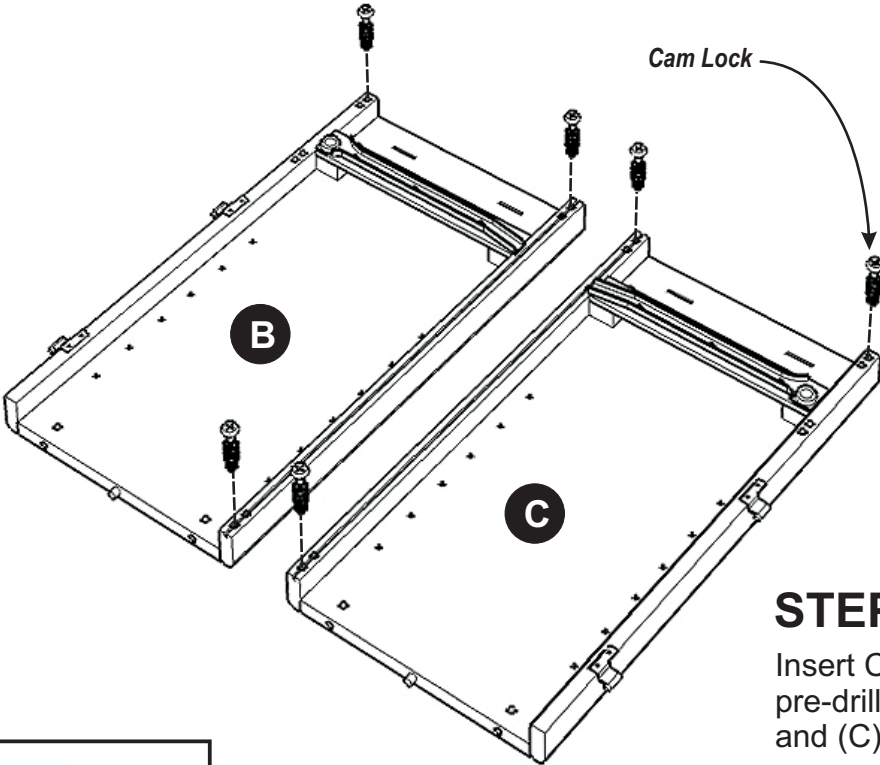
Tools required for assembly: **Phillips** screwdriver

Home Styles Consumer Assistance Line 888-680-7460 and 877-831-0319  
servicedesk@homestyles-furniture.com

# Assembly Instructions 2/6

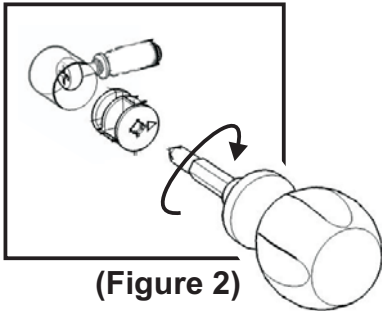
**IMPORTANT**

Please keep Hex Wrench in a safe place as you may need to tighten up the Head Cap Bolts in the future.



## STEP 1

Insert Cam Lock Screws into the pre-drilled holes of Side Panel (B) and (C). (See figure 1)

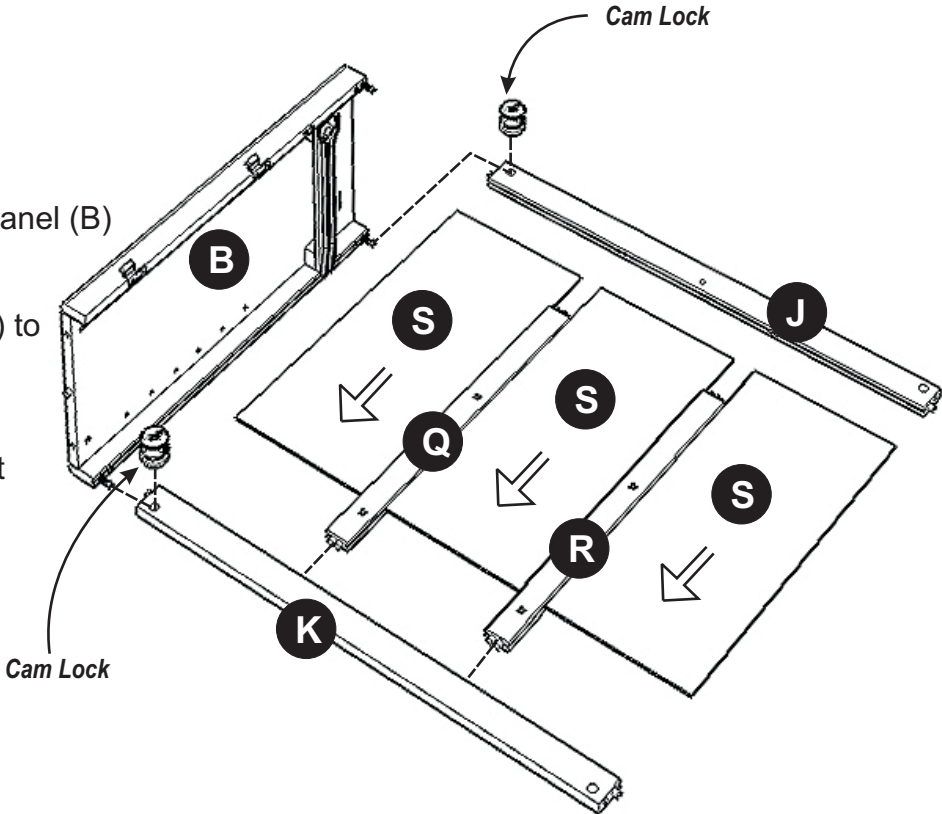


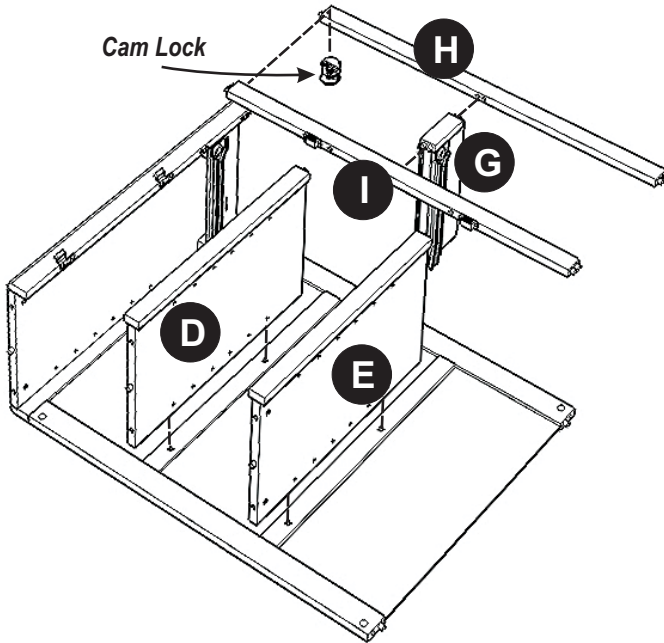
## STEP 2

Attach Back Rail (K) to Side Panel (B) with Cam Lock.

Attach Back Piece (Q) and (R) to Back Rail (K) and slide Back Panel (S) into place.

Attach Back Rail (J) to the unit with Cam Lock. (See figure 2)





## STEP 3

Attach Middle Panel (D) and (E) to the unit.

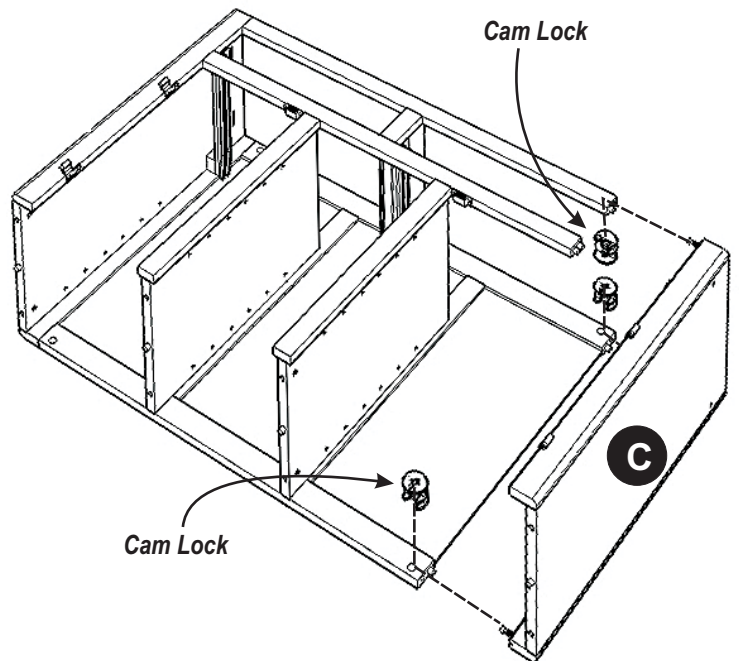
Attach Front Rail (I) to the unit.

Attach Divider (G) to Front Rail (I).

Attach Front Rail (H) to the unit with Cam Lock.

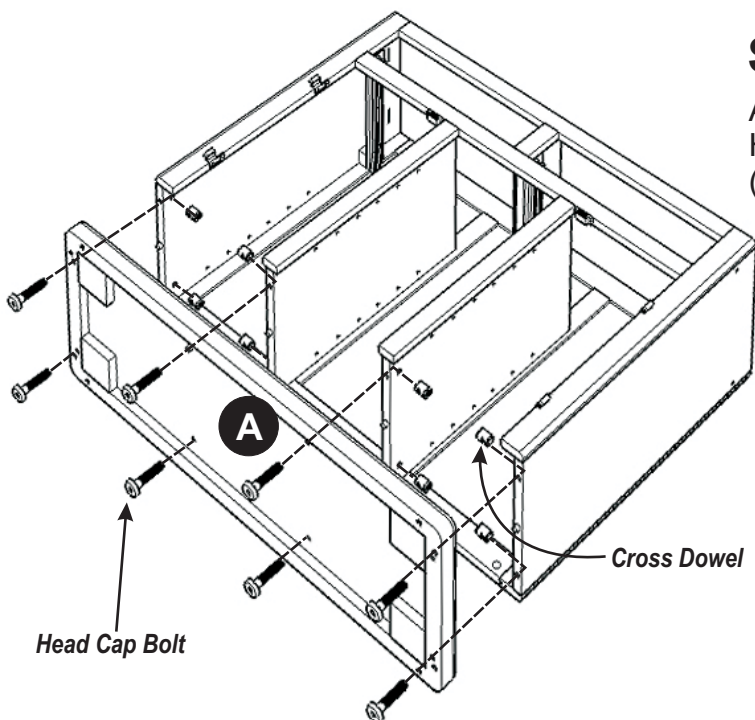
## STEP 4

Attach Side Panel (C) to the unit with Cam Locks.

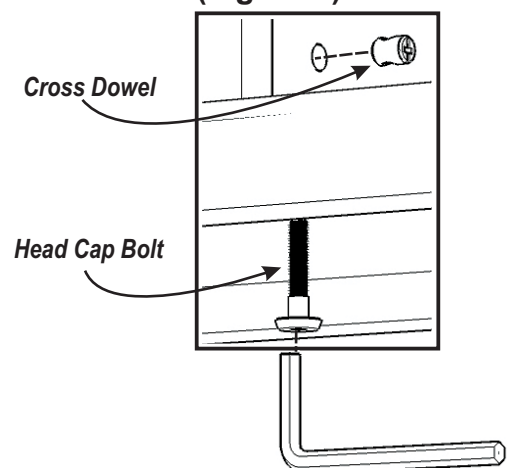


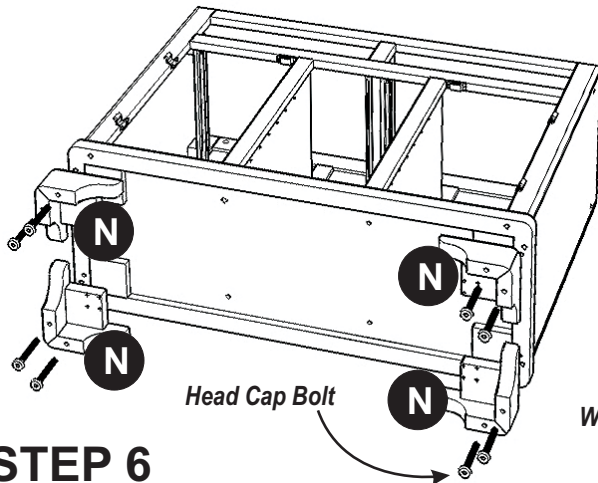
## STEP 5

Attach Bottom (A) to the unit with Head Cap Bolts and Cross Dowels. (See figure 3)



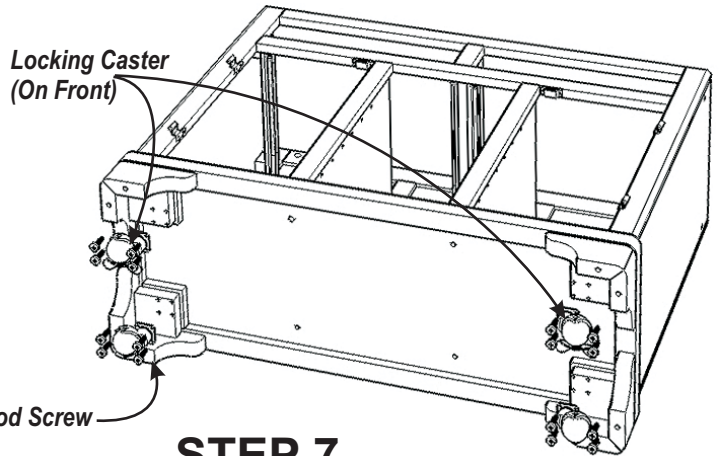
(Figure 3)





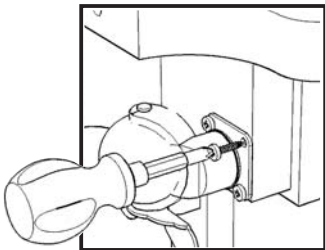
## STEP 6

Attach Leg (N) to the unit with Head Cap Bolts.

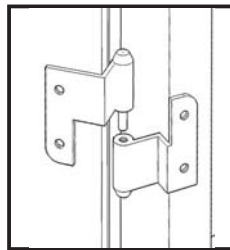


## STEP 7

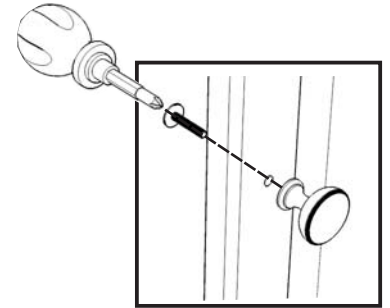
Attach the four Casters to the Leg (N) with Wood Screws. (See figure 4)



(Figure 4)



(Figure 5)



(Figure 6)

## STEP 8

Attach Side Bar (F) to unit with Machine Screws.

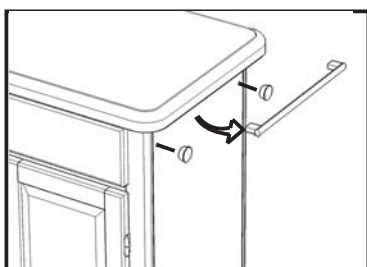
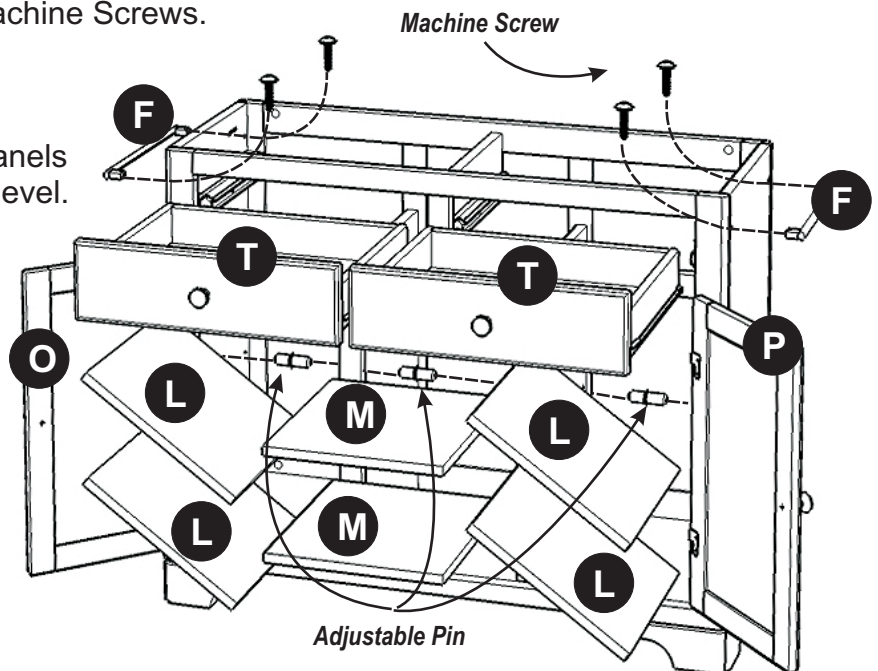
Slide Drawer (T) into position.

Insert Adjustable Pins into Side Panels and Middle Panels at the desired level.

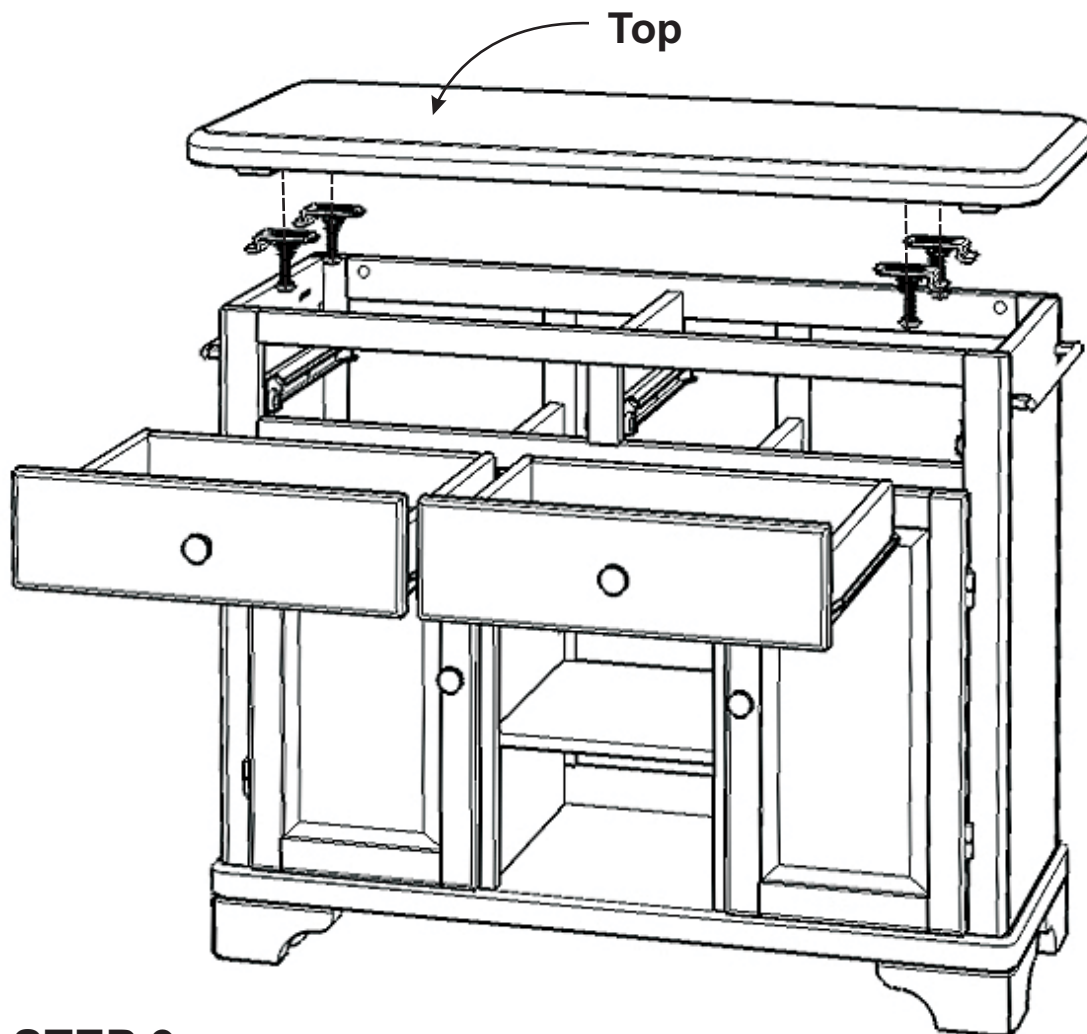
Slide Shelf (L) and (M) into place.

Attach Door (O), (P) to the Side Panels by sliding the door lift hinges into the side panel hinges. (See figure 5)

Assemble Pull Handles to Doors (O), (P) with Machine Screws. (See figure 6)



**Note: If Side Bars are not desired, Wood Plugs are provided. Put Wood Plugs in Screw holes in unit in place of the Side Bars.**

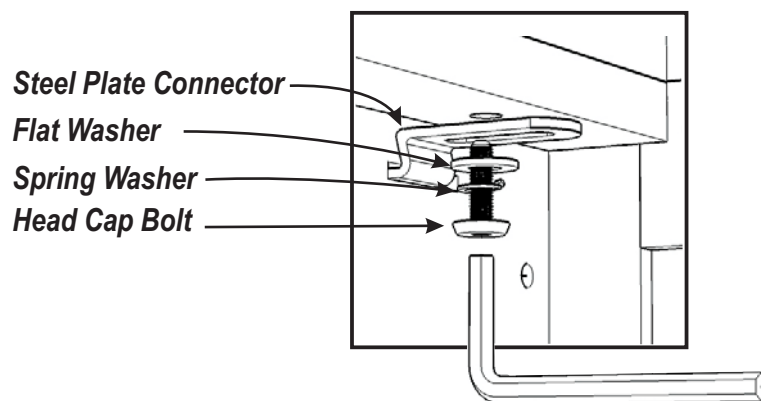


## STEP 9

Pull out the Drawers from unit.

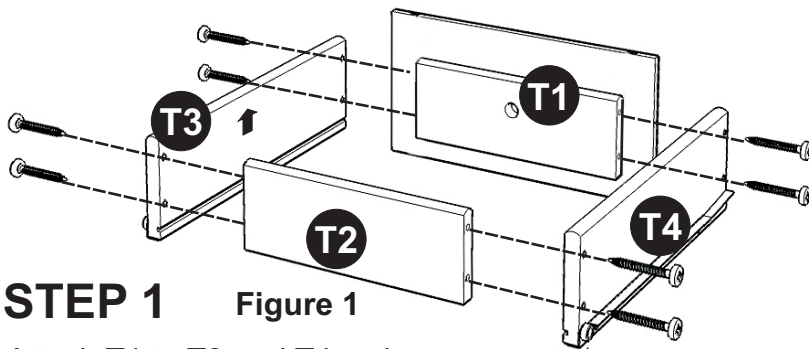
Using the Top option that you have chosen, place Top onto the unit with Steel Plate Connectors, Flat Washers, Spring Washers and Head Cap Bolts and tighten. (See figure 7)

Slide Drawers into place.



(Figure 7)

# Drawer (T)

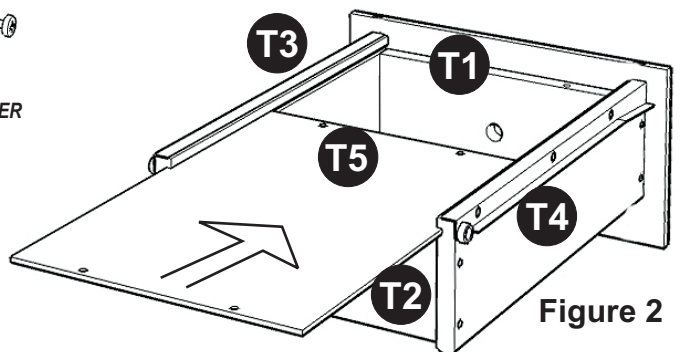
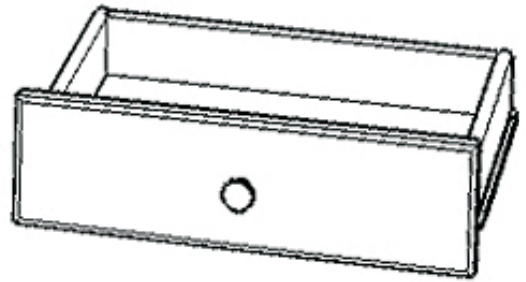


**STEP 1** Figure 1

Attach T1 to T3 and T4, using a Phillips screwdriver and long wood screws (4X), tighten halfway.

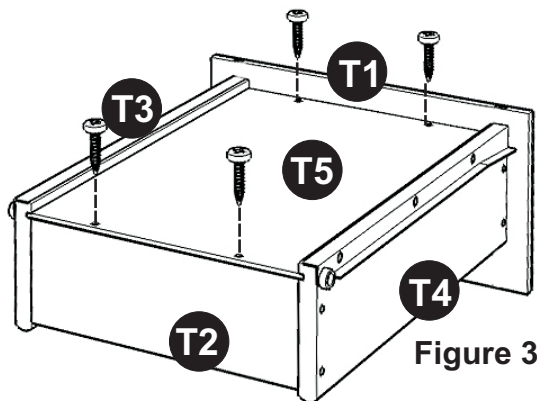
Attach T2 to T3 and T4 using long wood screws (4X), tighten halfway. (see Figure 1)

MAKE SURE ROLLER IS ON THE BACK



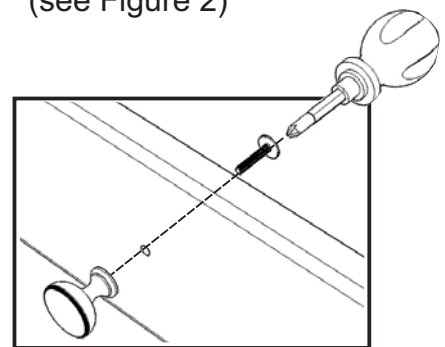
**STEP 2**

Slide T5 into the grooves in T3 and T4. Be sure to push T5 all the way forward so it meets T1. (see Figure 2)



**STEP 3**

Insert short wood screws (4X) into the pre-drilled holes in T5, tighten screws. (see Figure 3)



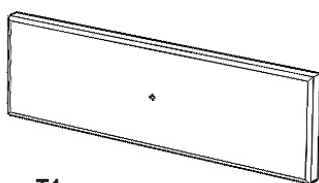
**STEP 4**

Assemble Pull Handle with machine screws. (see Figure 4)

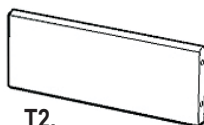
Figure 4

**Tighten all screws used in drawer assembly.**

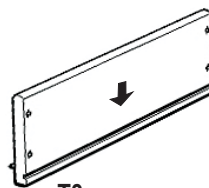
## Part List



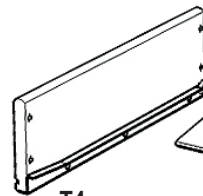
T1.  
Front Part  
2 pcs.



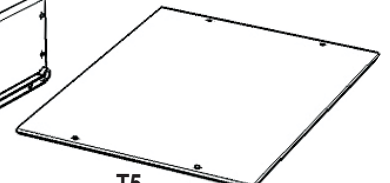
T2.  
Back Part  
2 pcs.



T3.  
Side Part  
2 pcs.



T4.  
Side Part  
2 pcs.



T5.  
Base Part  
2 pcs.